

**THE VILLAGE GREEN  
PLAY AREA 'A' - 270 sq.m.**

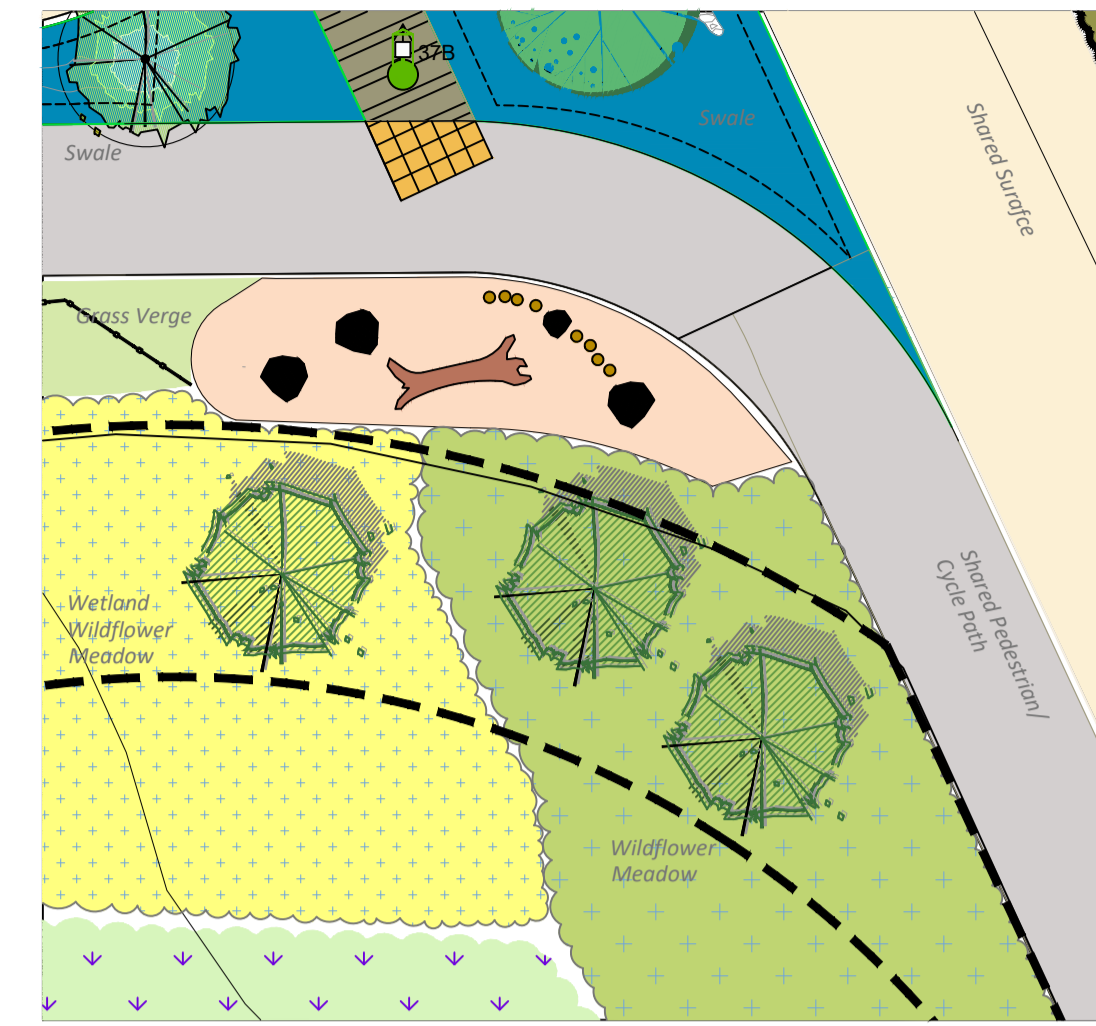


1. Wide Slide with Platform

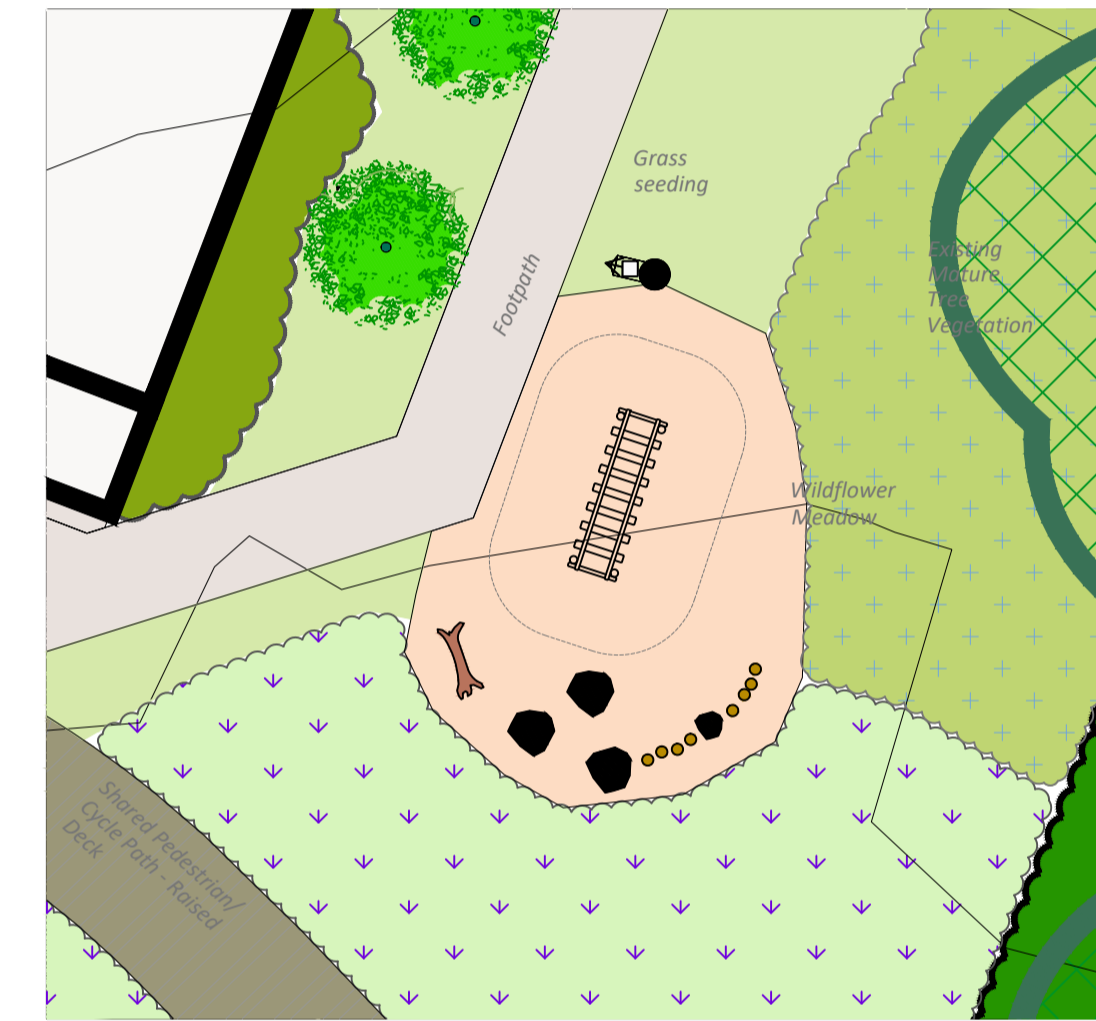


2. Basket Swing

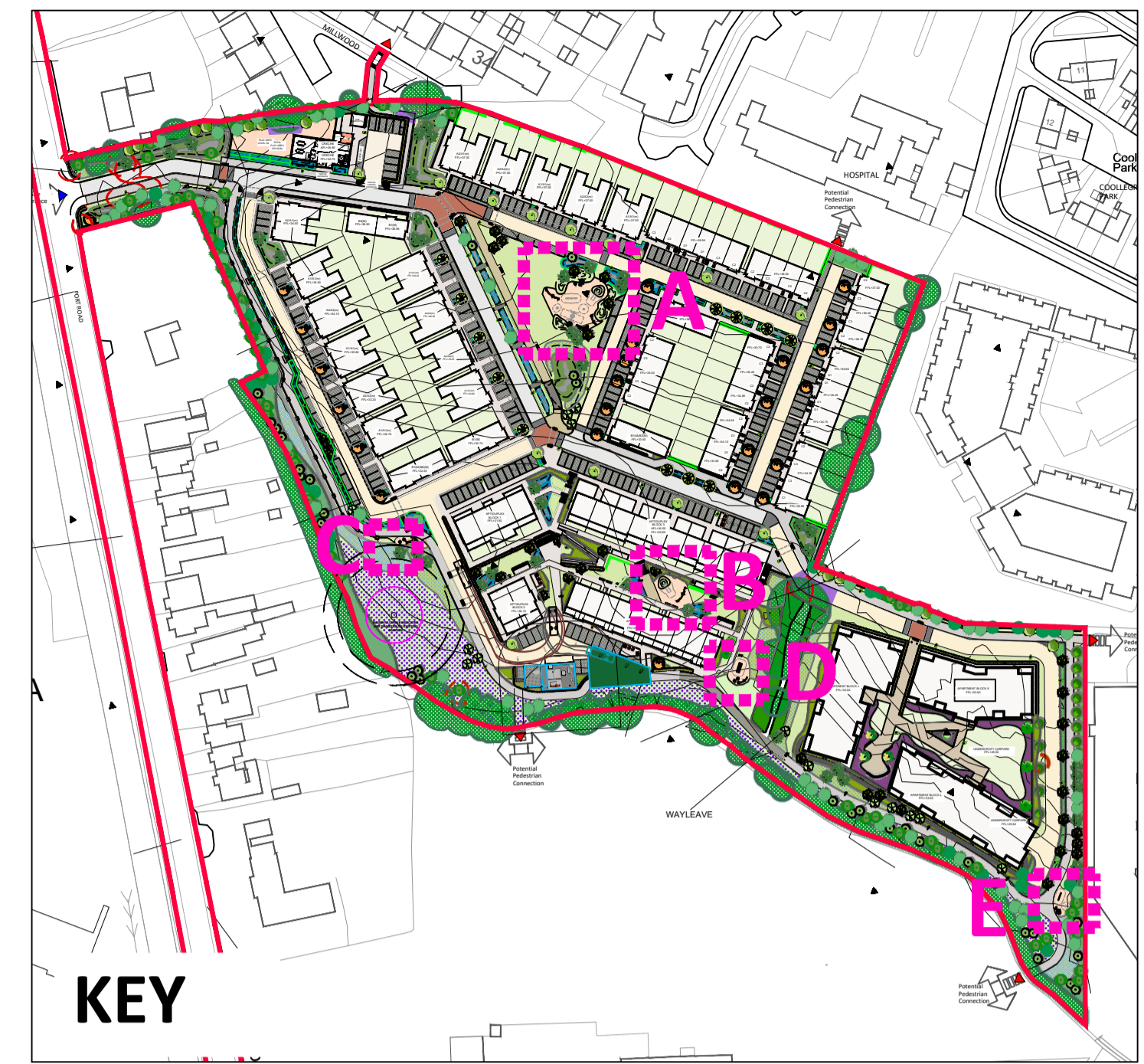
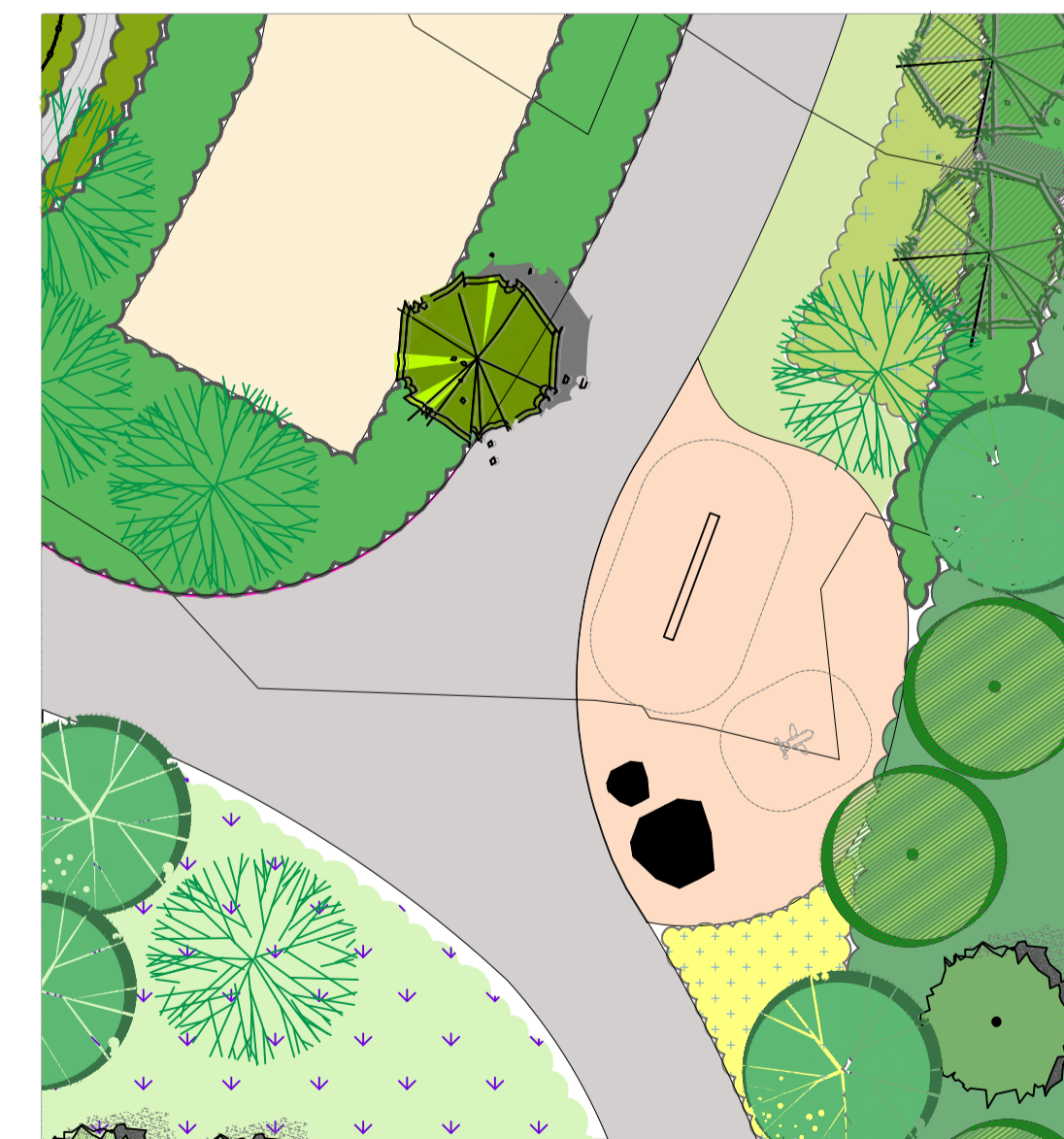
**THE GREEN LINK  
INCIDENTAL PLAY AREA 'C' - 43 sq.m.**



**THE GREEN SPINE  
INCIDENTAL PLAY AREA 'D' - 62 sq.m.**

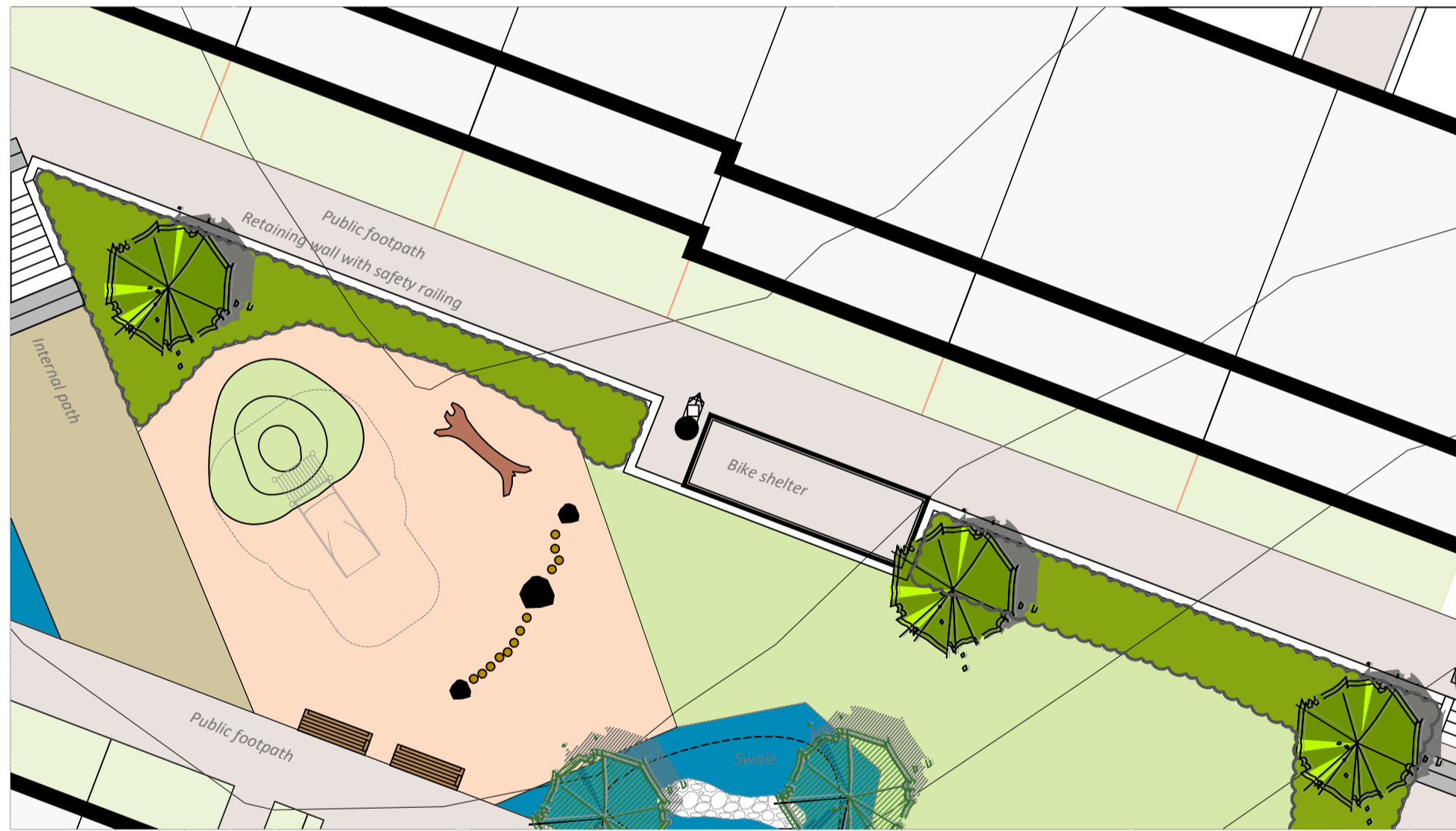


**THE GREEN LINK  
INCIDENTAL PLAY AREA 'D' - 57 sq.m.**



**KEY**

**THE GARDEN COURT  
PLAY AREA 'B' - 120 sq.m.**



3. Double Seesaw



4. Springer



5. Spinner Plate



9. Boulders



6. Balance Beam



7. Balance / Totter Bridge



8. Stepping Posts



10. Rubber Safety Surface



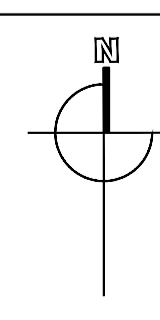
11. Tree Trunks

Rev	Date	Drawn	Checked	Description
01	11/04/2024	CD	DB	Updated to 2024 landscape plan
00	11/11/2021	AK	GD	

Notes	

COPYRIGHT © ALL RIGHTS RESERVED.  
THIS WORK IS COPYRIGHT AND CANNOT BE REPRODUCED OR COPIED IN ANY FORM WITHOUT THE WRITTEN PERMISSION OF THE ORGANIZATION.  
DO NOT SCALE FROM THIS DRAWING. WORK ONLY FROM FIGURED DIMENSIONS.  
THIS DRAWING TO BE READ IN CONJUNCTION WITH RELEVANT CONSULTANT'S DRAWINGS.

Note: For further details on the approach to design and specification of play see Doc Ref No. 6620-RP05: *Landscape Design Report*, page 3 and the section titled *Landscape Strategy, Play Spaces & Incidental Play Network*, pages 20-21.



Project: Proposed Residential Development Port Road, Killarney, Co. Kerry		Project No. 6620	
DIB: Play Areas		Drawing No. 303 01	
Scales: 1:150@A1	Status: PLANNING	Date: 11/04/2024	
Penrose Wharf Business Centre, Penrose Wharf, Cork Tel: +353(0)21 242 9829		mail@bradyshannonmartin.com www.bradyshannonmartin.com	
Drn. CD	Chk. DB	Passed	

